

APPLICABLE SIGNALS

DVD/DTV

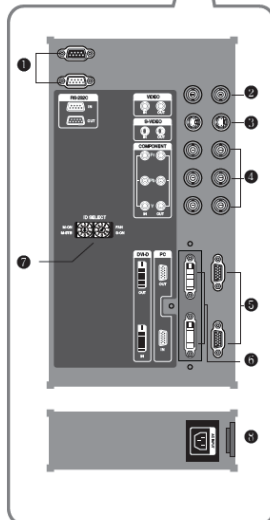
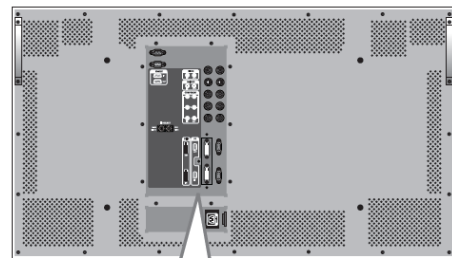
Input Signal		Resolution	Remarks
DVD	480i	720 x 480	
	480p	720 x 480	
	576i	720 x 576	
	576p	720 x 576	
DTV	720p	1280 x 720	
	1080i	1920 x 1080	

PC & DVI

Resolution	V-Freq. (Hz)	H-Freq. (KHz)	Remarks
800 x 600	60	37.88	VESA DMT
853 x 480	60	31.50	
1024 x 768	60	48.36	
1280 x 768	60	47.69	VESA CVT
1400 x 1050	60	65.317	
1280 x 960	60	60.00	VESA DMT
1280 x 1024	60	63.97	
1360 x 768	60	47.71	
1600 x 1200	60	75.00	
1706 x 960	60	59.57	

SPECIFICATIONS

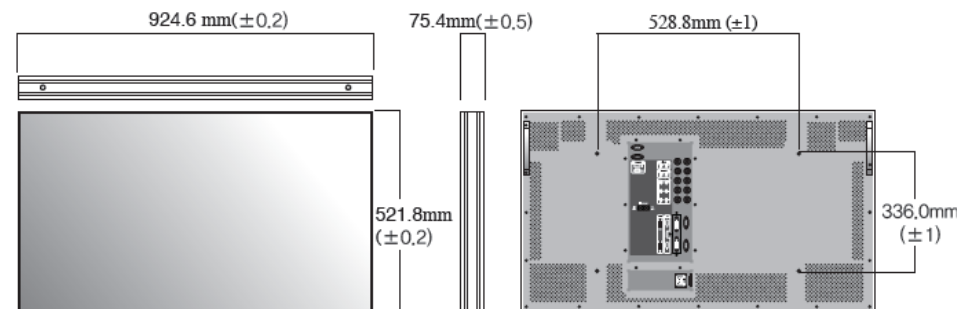
Model name	MIS-4220		
Power supply	100 ~ 240V AC 50/60Hz		
Power consumption			
	Average (Typical)	300W	
	Max	360W	
Plasma Display Panel	42 inch, 16:9 Aspect Ratio		
	Contrast ratio	10.000:1 (Dark Room)	
	Brightness	1.000 cd/m ² (W/O Film)	
Front Filter	AGAR (Anti Glare Anti Reflection)		
Number of pixels	853(H) X 480(V)		
Seam gap (in case of multi formation)	4mm		
Environmental condition			
	Temperature	0° C ~ 35° C	
	Humidity	20% ~ 70%	
Signal			
	Video signal	NTSC, PAL, SECAM	
	PC signal	SVGA, WVGA, XGA, SXGA, WXGA, UXGA	
	Frequency	Horizontal Frequency 15.5 ~ 775 kHz Vertical Frequency 50/60Hz	
Connectors	Input	Output	
	Video	Same as left side	
			CVBS : BNC 1pin
			S-Video : DIN 4pin
	Component		Y, Pb, Pr : BNC 3pin
	PC		PC RGB : D-Sub 15pin
	DVI	TMDS : DVI-D 24pin	
	Serial	RS-232C D-Sub 9pin (female)	RS-232C D-Sub 9pin (male)



- RS-232C**
MPDP Control, Firmware Upgrade, 9pin D-sub
- Video**
Composite Signal
NTSC, PAL, SECAM
- S-Video**
S-Video Signal
NTSC, PAL, SECAM, 4pin Mini Din
- Component**
DVD Signal
DTV - YPbPr Signal
- PC**
Computer RGB Analog Signal, D-sub 15pin
- DVI-D**
TMDS Signal
- ID Switch**
Set ID Switch
- AC Input**
AC 100V ~240V, 50/60Hz

External dimension

924.6mm[W] X 521.8mm[H] X 75.4mm[D]



www.naadloosplasma.nl

info@naadloosplasma.nl

R&D Communications BV

De Hout 48

1607 HD Hem

The Netherlands